



New lease of life for Old College

The University's plan to renovate and redevelop the iconic Old College building on Aberystwyth seafront received a very welcome New Year boost.

On 14 January the University received the news that it has been awarded almost £10 million (£9,732,300) of National Lottery money to help renovate the Old College and secure its long term future as a centre for culture, heritage, discovery, learning and enterprise attracting 190,000 visitors annually.

An additional £3 million will also be invested by the Welsh Government and £3 million from the European Regional Development Fund through the Tourism Attractor Destination programme to promote the new tourism opportunities that will come in the wake of its redevelopment.

Under the plans, the Old College will be developed as a centre for engaging activities with gallery spaces for exhibitions, art and music, a centre for entrepreneurs and new businesses and artist studios, new student

study spaces and lifelong learning facilities, as well as café and community rooms, a boutique hotel and facilities for major events and festivals. A new Centre for Dialogue, the first in the UK, will be a key attraction in new spaces for meetings and conferences.

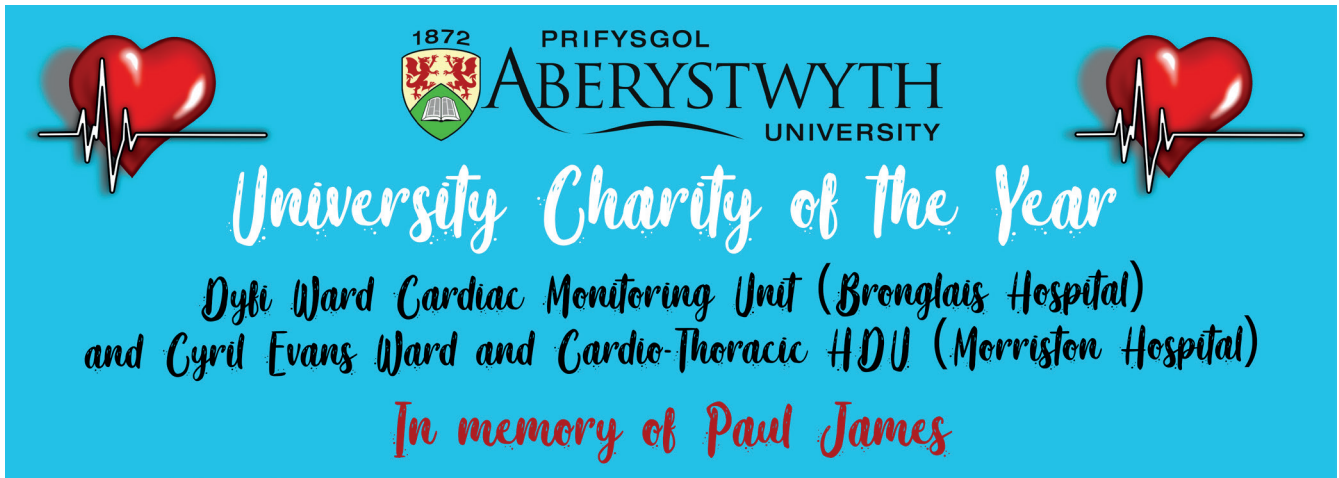
Old College will also house a Discovery Centre - the World of Knowledge, allowing some of the 30,000 items normally in storage to be shown the light of day. Science exhibitions will showcase cutting edge interactive displays alongside an AV space, highlighting the University's role in space exploration.

The total cost of the redevelopment is estimated to be around £27m. It is hoped that the building's rejuvenation will be completed by 2022/23 when the University celebrates its 150th anniversary.

Main photo: Dr Rhodri Llwyd Morgan (Director of Welsh Language and External Engagement), Miss Gwerfyl Pierce Jones (Chair of the Old College Project Board), Dr Emyr Roberts (Chair of Aberystwyth University Council), Lord Elis-Thomas AM (Deputy Minister for Culture, Sport and Tourism), Baroness Kay Andrews (UK trustee and chair of the National Lottery Heritage Fund in Wales), Professor Elizabeth Treasure (Vice-Chancellor), Jim O'Rourke (Old College Project Manager), and Louise Jagger (Director of Development and Alumni Relations)

- 6
Food and drink at the Arts Centre
- 8
Campus investment and improvement
- 12
Keezle Wacka
- 14
In addition to the day job
- 18
My research

ABER^{News} is published by the Communications & Public Affairs Team, Aberystwyth University.
 Tel: 01970 622578
 E-mail: communications@aber.ac.uk
 The next edition will be available in **May 2020**.
 Copy deadline is **23 March**.



Wear Red Day

Based on the success of last year's Wear Red Day, which raised £1,340 for the Wales Air Ambulance, it was decided to make the event an annual occurrence. This year, Wear Red Day will take place on **Friday 28 February**.

On the day money will be raised for the University Charity of the Year 2019-20, as voted for by students and staff.

This year's chosen causes are Dyfi Ward Cardiac Monitoring Unit at Bronglais Hospital (Aberystwyth) and Cyril Evans Ward and Cardio-Thoracic HDU at Morrison Hospital (Swansea) in memory of Paul James.

Paul had worked as a Security Officer on Penglais and Gogerddan campuses for more than 23 years. In April 2019 we were shocked and saddened to hear of his tragic death following a collision while training for a charity cycle ride in aid of the two cardiac wards.

On Friday 28 February, Aberystwyth University staff are invited to come to work wearing something red and make a small donation to the cause.

Aberystwyth Arts Centre will be donating £1 for every breakfast sold from its new menu.

In IBERbach £1 will be donated from every coffee made with the guest coffee beans from Teifi Red Dragon.

Hugh Owen library will be inviting people to donate any library fines and sales from their book sale.

The Student Shop in the Students' Union will be offering a Wear Red Day meal deal at £3.50 for sandwich, crisps or fruit and a drink, with the whole amount being donated to the cause.

At lunchtime, TaMed Da will be offering a selection of delicious Welsh dishes, with a donation from each dish sold going to the University Charity of the Year. There will also be a tombola in the TaMed Da conservatory.

The Sports Centre will be delivering classes with a HIIT element included (short duration and high intensity) throughout Wear Red Day along with a number of gym challenges. The sessions will offer everyone the physical and psychological benefits of exercise and a glowing facial for free! Donations will be welcomed and there will be a prize for the best photo uploaded. #WearARedFace

If staff would like to fundraise in other ways on the day, such as by running a Cake Stall within your department, this would add to what is going to be a fun fundraising occasion. Please let the Communications Team know if your team or department is planning to do something by e-mailing communications@aber.ac.uk

Keep up to speed with Wear Red Day events across campus by visiting: www.aber.ac.uk/en/about-us/charity/wearredday

Aber10k



Photographed are members of TimAber who completed the Aber10k on Sunday 8 December, raising £410 for the University Charity of the Year.

Back row, left to right: Sian Williams, Hayley Goddard, Paul Gatehouse, Tom Bates, Dafydd Davies, David Moyle, Adrian Harvey

Front row, left to right: Arthur Dafis, Dylan Jones, James Chaytor

The Vice-Chancellor's Column



It's been good to see some early signs of Spring on campus over the last couple of weeks. The sun is beginning to feel a little warmer, and it is a pleasure to see daffodils once again blooming on the flowering bank beneath the Hugh Owen Library. There are signs of new life everywhere you look.

Our bid to bring new life to the Old College took a huge leap forward early in the new year, with the awarding of almost £10 million of National Lottery money, £3 million from the Welsh Government and £3 million from the European Regional Development Fund. Added to the £2.6 million already raised from an initial grant from Welsh Government and charitable trusts and £850,000 generously donated by alumni and friends, this means that we have secured 70% of the total cost of £27.6 million and are now able to launch the delivery phase of the project. It really is exciting to think that this much-loved building will once again become a buzzing hub of community activity, culture and learning. I would like to offer my thanks to the staff members whose are working tirelessly to make this dream a reality, as well as alumni and friends worldwide who have supported our fundraising appeal so far.

Aber is fortunate to have an actively engaged network of alumni across the world. At the end of January, myself and colleagues attended a special reception in Washington to celebrate one hundred years of our Department of International Politics and the ways in which its work has helped to shape the world we live in. It was a pleasure to tell our alumni in the US about some of the exciting developments going on at the University. The visit was also an opportunity to forge and celebrate new alliances, such as an innovative partnership with the University of Alabama at Birmingham, which will offer exciting study abroad opportunities to our students and theirs.

At the end of January we published our Financial Statements for the year ending 31 July 2019. The statements clearly demonstrate the financial progress we have made in recent years, with the deficit for the year in line with our budgetary planning and the institution remaining on track to deliver a small operating surplus in 2019/20.

Looking ahead to the end of this month, on Friday 28 February we will be holding our second Wear Red Day, when I hope you will join me in donning something red and helping to raise money for this year's University Charity of the Year in memory of our colleague Paul James. There will be fundraising in TaMed Da, the Arts Centre, IBERbach, the Student Shop, the Sports Centre and the Library, but we are also inviting teams and departments to come up with their own ways to raise money. My colleagues and I will be holding a cake stall in the Visualisation Centre, and I'll be lending a hand serving lunch in TaMed Da.

Later this month I will also be holding an afternoon of Staff Talks. I strongly believe in the importance of regular dialogue and communication, and these events give you the chance to hear from me, and equally importantly, give me the chance to hear from you. I look forward to seeing as many as possible of you then, but if you are unable to attend, you are welcome to send your question to vice-chancellor@aber.ac.uk

Professor Elizabeth Treasure
Vice-Chancellor



Signing Memorandum of Understanding with Dr Suzanne Austin, Senior Vice Provost and Senior International Officer at University of Alabama at Birmingham, January 2020

Pioneering greenhouse becomes even greener

The carbon footprint of the National Plant Phenomics Centre at Gogerddan has been significantly reduced by the installation of new LED lights.



Jason Brook and Fiona Corke from the National Plant Phenomics Centre with one of the 96 LED lights that have been fitted to the centre's main greenhouse

96 of the original lights in the robotic greenhouse have now been replaced with LED lights that provide the correct wavelength for plant growth, particularly during winter months.

As well as reducing carbon dioxide emissions by 60 tonnes per year the new lights will also cut the Centre's annual electricity bill by around £17,000.

Funded by the Biotechnology and Biological Sciences Research Council (BBSRC), the National Plant Phenomics Centre greenhouse is the only one of its kind in the UK, and is home to pioneering research work to identify and develop resilient crops that can help combat the effects of climate change on agriculture, such as increased drought resistance and the ability to survive floods.

The University is developing a new Carbon Management Strategy in-line with the Welsh Government's ambitious target of a Carbon Neutral Public Sector by 2030.

Former First Minister to join Department of Law and Criminology

The former First Minister of Wales Carwyn Jones AM has been appointed Professor of Law at the University's Department of Law and Criminology.

Carwyn Jones will join the department on a part-time basis in advance of stepping down from his role as the Assembly Member for Bridgend at the end of the current Assembly in 2021.

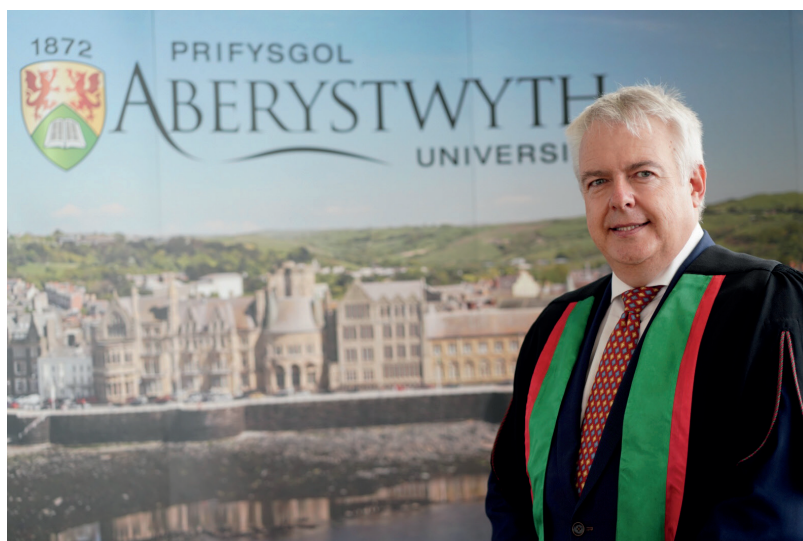
In his new role he will deliver lectures and contribute to the wider debate on public and constitutional law.

A former pupil at Brynteg Comprehensive School in Bridgend, Carwyn Jones studied Law at Aberystwyth and was presented as Fellow of the University in July 2019.

After training as a barrister in London, he practised in Swansea for ten years during which time he worked as a professional tutor on the Bar Vocational Course at Cardiff University.

He was first elected to the first National Assembly for Wales in May 1999.

Appointed Minister for the Environment, Planning and Countryside following the 2003 election, he subsequently held the posts of Minister for Education, Culture and the Welsh Language, Counsel General and Leader of the House. He served as First Minister from 2009 until 2018.



Professor Elizabeth Treasure, Vice-Chancellor, said that Carwyn Jones brings with him a "wealth of legal, constitutional and political knowledge and experience" and Professor Emyr Lewis, Head of the Department of Law and Criminology said that he will be able to provide a "valuable insight into the British constitution at a time of great potential change."

An ACE up my sleeve

New scheme seeks Academic Champions of Enterprise

The small AberCareers Enterprise Team supports students, graduates and staff who are interested in starting new businesses. Through a program of workshops and events, the team offers help and advice on all aspects of turning a good idea into a great enterprise.

In order to help to promote their message that working for yourself is a viable option for students and recent graduates, and to highlight enterprise skills that students can use in any working situation, the Enterprise Team is establishing a network of staff members in academic departments known as 'Academic Champions of Enterprise' (ACEs).

*ABER*News spoke to Tony Orme from the AberCareers Enterprise Team about what being an ACE is all about:



How do the AberCareers Enterprise Team promote enterprise and entrepreneurship?

Traditionally, most of what we have done has been about helping students with good ideas for business or social enterprises to turn these good ideas into viable businesses, with a series of extracurricular workshops, presentations, mentoring sessions and other support.

This, however, has concentrated our support on a relatively small group of entrepreneurially-minded students.

What we are now looking to do, in addition to this student start-up support, is to communicate with a much wider group of students, in all academic departments, highlighting the importance of enterprise skills not just in new business starts but as important skills that can equally be used *intrapreneurially* in whatever their chosen career might be. Skills such as problem solving, planning, researching markets and thinking creatively are just as useful to graduates who go on to be employed as those who choose self-employment.

What does this new role of 'Academic Champions of Enterprise' entail?

Academics are in a great position to see opportunities in degree courses and specific modules in their department, where enterprise skills can be highlighted and developed.

Once the ACEs have identified opportunities to enhance

or embed enterprise into their department's curricula, the team at AberCareers can facilitate the development of these opportunities by, for instance, bringing in an entrepreneurial role model relevant to the area of study.

Why is it an advantage to have a network of people based in academic departments?

The ACEs know the students, staff and degree schemes in their respective departments, putting them in an excellent position to spot opportunities. They will, hopefully, be the 'go to' people in their departments, for all things to do with enterprise, entrepreneurship and start-up.

How many ACEs are there so far, and will you be looking to find more?

So far we have identified ACEs in six academic departments (English, IBERS, Psychology, Geography and Earth Sciences, Computer Science and the Business School) as well as an ACE who works for the Students' Union.

Over the coming year we are looking to expand the network of ACEs until, potentially, there is an ACE in every academic department.

What can people do to find out more?

Tony Orme and Louise Somerfield, who are the Enterprise Team in AberCareers, are happy to speak to anyone about the ACE network and can be contacted at: aberpreneurs@aber.ac.uk



Back row: Louise Somerfield, Malte Urban, Neal Snooke, Matthew Hegarty, Tony Orme
Front row: Jonathan Fry, Zhimin He

Food and drink at Aberystwyth Arts Centre

Some of you may have noticed some of the changes we have been making at the Café & Bars at the Arts Centre.

Over the past few months we have been working hard with consultant chef, Scott Davis, to realise our ambitious plans to take our food and drink offering to the next level.

Through support from the Arts Council of Wales' Resilience Programme, we have devised three guiding principles to help with our decision making, applying them to the food we make, the products we sell and the service we deliver. These are:

1. Provenance - supporting the very best Welsh produce and suppliers, with quality underpinning the products we make and sell.
2. Sustainability - work towards having as little an impact on the environment as we can, raising awareness, acting responsibly, working with all our stakeholders to help achieve this.
3. People Centred - putting our customers at the centre of everything we do, to offer the best service, personal and welcoming, ensuring our staff are equipped and empowered to do so.

All our food is made fresh daily in our kitchens by our talented and creative chefs. In the last three months we have



updated our sandwich selection, our salads, and our soups, with our hot food offer currently under the 'microscope'!

We also donate our un-sold sandwiches to The Wallich homelessness and housing charity Wales as part of our social action initiatives.

Our cakes are just as fabulous as ever, with an expanding range of vegan and gluten free options.

We have completely revamped our

breakfast offer, with new additions such as smashed avocado and feta on toast, fresh fruit salad, yoghurt and granola drizzled with rose water syrup, and we even have vegan croissants.

We hope you have enjoyed the changes we have made so far and there is more to come!

We are particularly pleased to be working with Scott James, founder of Coaltown Coffee, which will become our new Coffee supplier in February. Coaltown provide some of the highest quality coffees available on the market, roasted in their roastery in Ammanford. They are B-Corp certified, recognised for putting the planet and people first, meeting the highest standards of verified social and environmental performance.

We would like to take this opportunity to thank all of you who visit our café and bars, your custom and support is very much appreciated. Do let us know what you think about our new products.

Kraig Pugh
Business Development Manager



For more information on food and drink at the Arts Centre please visit: www.aberystwythartscentre.co.uk/food-drink



A minute with... yoga teacher Kathryn Jackson

Kathryn Jackson is one of the latest yoga teachers to join the excellent teaching team at Aberystwyth University Sports Centre. Kathryn's style of yoga incorporates both meditation and yoga postures to improve your health and wellbeing. This is her story and her move to Aberystwyth:



Tell us a bit about yourself

I am originally from Manchester and grew up in a suburb called Withington. Each year we would holiday in my Dad's home town of Scarborough, and the draw of the seas was an important decision for my partner and I when we decided to move.

What are your first impressions of Aber?

Aberystwyth area has is all - beautiful countryside and that rare mixture of things going on but lots of peace and quiet.

I love how friendly and welcoming everyone has been, the countryside, the greenery, the fresh air, the peace and quiet and the feeling of space.

I enjoy living close to the lively town of Aberystwyth - great independent shops, the vibrancy from the university and all the amenities you need. I also greatly appreciate being able to get some sea air every time I go shopping.

Aber is much friendlier, greener and much more spacious than where I used to live. There are also a lot less people! However, I do miss being able to use public transport. Although there is a bus service from the village I live in, 8 miles outside Aber, it is not frequent enough to be able to use it to commute so I have to use the car a lot more than I'd like.

How long has yoga been a part of your life?

I found yoga when I was living and working in London (about 15 years ago) and regularly went to classes, but it wasn't until 2010 that it became a much bigger part of my life and I decided to take my teacher training.

I've taught yoga in Hong Kong, London and Folkestone but always fitting it around a full-time job - it wasn't until I came to Aber that I've had the opportunity to teach more classes.

I draw on my teacher training from integral yoga, which incorporates everything from pranayama, meditation, postures and sequencing, through to karma yoga.

I've been fortunate enough to try lots of different styles and attend workshops and teacher trainings for yin yoga, yoga nidra, restorative yoga and advanced sequencing.

I tend to teach a slower style of yoga that is suitable for all... I like to incorporate a bit of everything: stretching, strengthening, balancing and relaxing. My aim for every class is for everyone to leave feeling better than when they arrived.

Meet Kathryn at Gentle Yoga - Tuesday 2pm in the Sports Centre or 12pm at Gogerddan every Monday and Thursday.



Campus investment and improvement

ABER *News* asked Maria Ferreira, Operations Manager in the Estates Department, for an update on some of the projects that had kept her department busy in 2019:

Iris De Freitas study room

One of our major projects last year was the complete refurbishment of the Iris De Freitas study room in the Hugh Owen Library.

Refurbished at a cost of £900k, the key drivers were accessibility, inclusion and sustainability.

The newly refurbished room is an inviting and comfortable group study space for students, with the new curved ceiling giving a sense of height and the glass study rooms that have been installed making better use of the space.

The room is now more accessible, thanks to the installation of a new external evacuation lift.

There is also improved heating and better insulation to improve energy efficiency. The new tinted and heat-reflecting windows conserve heat and reduce glare, and have an inbuilt ventilation system with automatic opening and closing vents.

The room has also been fully rewired, redecorated and new carpets laid, and a new LED intelligent lighting system has been installed, including colour changing lights.



Newly refurbished Iris De Freitas Study Room

In addition to new furniture and computers in the study areas, a relaxed seating area has been created, with vending machines and gender neutral toilet facilities installed.

C22 Lecture Theatre

Another big project was the refurbishment of the 180-seater C22 Lecture Theatre and video conference facility in the Hugh Owen building.

The room, which had not been refurbished for more than 25 years, now has brand new seating and carpets, an up-to-date audio visual system, improved acoustics, intelligent LED lighting system and power/USB sockets, and has been fully rewired and redecorated.

A modern heating, cooling and ventilation system has also been installed, and there is easier access for people with disabilities.

University Sports Centre

There has been continued improvements in our sports buildings to ensure quality leisure experience and sporting activities.

The swimming pool changing rooms and pool pit were refurbished, and lights were upgraded to LED (the previous lighting tubes could only be replaced when the pool was empty).

A no smoking zone has been created around the Sports Centre complex, and new smoking bins and signage have been installed to reinforce the University's Smoking Policy.



C22 Lecture Theatre, Hugh Owen building



Student Union building toilets

We have also completed a major refurbishment of the toilets in our Students' Union building, including replacing all fixtures and fittings, and installing new heating, ventilation, energy efficient lighting and fire alarms. The work included the provision for disabled and gender-neutral toilets.

Bike shelter

A covered, self-lockable bike shelter has been installed outside Rosser Hall, meaning that all of our accommodation blocks now have this facility available for students who wish to bring their bikes to university.

Communal areas

Work also continued on the refurbishment and redecoration of communal areas (hallways, stairways and corridors) in the older buildings to enhance student experience and ensure

these areas compliment the previous investment in the teaching laboratories and classrooms. There is also better wayfinding to help students to navigate within buildings.

Accessibility

We have continued with a programme of work to improve accessibility across campus - installing more automatic doors; increasing the number of disabled parking bays; improving and resurfacing roads, pathways and car parks; and installing two spending pens for the toilet needs of Assistance Animals.

Electric car charging points

We have installed electric car charging points (both fast and slow charging). We are now the only providers of fast car charging points within a 50-mile radius in mid Wales.

Energy Efficiency

Inefficient light tubes at the Venlo and Phenomics growth rooms (research-controlled plant environment) on our Gogerddan Campus have been replaced with new energy efficient lighting.

Property Maintenance

Our Property Maintenance team has continued to work on smaller projects, in addition to addressing staff and students' reactive maintenance issues. These works have included the creation of a dedicated waste segregation site on Penglais Campus, which is controlled by CCTV to prevent fly tipping. We have also refurbished some toilets in the Arts Centre and addressed Health and Safety issues at the roof on the Physical Sciences building.



Fit Together

MONDAY	
TIME	CLASS
09.15 - 10.00	Mixed Ability Cycle
12.00 - 13.00	Sportive Cycle
12.00 - 12.45	Yoga Gogerddan
12.15 - 13.00	HIIT
13.00 - 13.45	Aerobics
14.00 - 15.30	Introduction to Yoga
17.00 - 19.00	Ashtanga Yoga
17.30 - 18.30	Step and Tone
17.45 - 18.30	Mixed Ability Cycle
18.30 - 19.30	Pilates
19.00 - 20.30	Hatha Yoga

TUESDAY	
TIME	CLASS
07.15 - 08.00	Pilates
12.15 - 13.00	Pilates for Back Care
12.15 - 13.00	Advanced Cycle
13.10 - 13.55	AbCore
13.15 - 14.00	Mixed Ability Cycle
14.00 - 15.00	Gentle Yoga
17.30 - 18.30	Circuits
17.30 - 18.30	Step and Tone
17.45 - 18.30	TriSpin
18.30 - 19.30	Bodyfit
18.35 - 19.20	Mixed Ability Cycle
18.30 - 19.30	Zumba
19.00 - 20.00	Triathlon Swim

WEDNESDAY	
TIME	CLASS
07.30 - 08.15	Mixed Ability Cycle
09.15 - 10.00	Mixed Ability Cycle
09.30 - 10.15	* Parent & Baby Circuit
12.15 - 13.00	Mixed Ability Cycle
12.15 - 13.00	Bodyfit
13.10 - 13.55	Fit Ball Pilates
17.30 - 18.15	HIIT
17.30 - 18.15	Dumbbell Workout
18.15 - 19.15	Pilates
18.30 - 19.15	Aquafit
18.30 - 19.30	AbCore
19.30 - 20.30	Yoga For All

THURSDAY	
TIME	CLASS
07.15 - 08.00	Triathlon Swim
07.30 - 08.30	Yoga for All
12.15 - 13.00	AbCore
12.15 - 13.15	Advanced Cycle
13.10 - 13.55	Pilates
17.30 - 18.30	Circuits
17.30 - 18.30	Aerobics
17.45 - 18.30	Mixed Ability Cycle
18.30 - 19.30	Zumba
18.30 - 19.30	Bodyfit

FRIDAY	
TIME	CLASS
07.30 - 08.15	Mixed Ability Cycle
10.30 - 11.15	Aqua Gym
12.15 - 13.00	Circuit
13.10 - 13.55	Dumbbell Workout
16.00 - 17.00	Power Yoga
17.00 - 18.30	Yoga for All
17.30 - 18.15	HIIT
17.45 - 18.30	Mixed Ability Cycle
18.30 - 19.30	Zumba

SATURDAY	
TIME	CLASS
09.05 - 09.50	Mixed Ability Cycle
09.30 - 10.30	Bodyfit
10.45 - 11.45	Pilates

SUNDAY	
TIME	CLASS
09.05 - 09.50	Mixed Ability Cycle
11.00 - 12.00	Zumba

@AberSport
f t i

All classes, gyms, pool and climbing wall included in your Sports Centre Membership

*Non Members welcome
Pay as you go*

45 minutes	£3.60
60 minutes	£4.80
90 minutes	£7.10
Cycle	£4.10

All classes finish 5 minutes prior to the stated time to allow for change overs between sessions

* Not during school holidays

To find out who is teaching a session and for more information please visit our web pages



Tel: 01970 622280
Email: sports@aber.ac.uk
www.aber.ac.uk/sportscentre/classes

The management retain the rights to alter the programme at short notice.

For current information please visit: www.aber.ac.uk/sportscentre/classes/timetable

Spotlight on...

the School of Art Galleries and Museum

The School of Art is located in the Grade II* listed Edward Davies Building on Buarth Mawr. The magnificent building also houses the School of Art Galleries and Museum. Comprising some 20,000 items, the University Collection has been acquired over almost 150 years. It is not only unique in Wales, but also of international importance.

ABER *News* spoke to Senior Curator and Lecturer, Neil Holland, about the history and importance of this remarkable collection of works:



Neil Holland

Tell us a bit about the history of the University collection and the ways in which the works are acquired

The collections are as old as the University. The first curator, chemist and geologist Frederick William Rudler, appealed for donations in 1872 with the intention of initiating a kind of National Museum for Wales reflecting the industries of Wales as well as the arts.

Local gentry and collector George E J Powell of Nanteos decided not to donate his collections of fine and decorative art to the town, but instead to the new University College and started giving us small items a decade before his final bequest in 1882.

The actual purchasing of works for the collection did not begin until 1921. In 1918 the Davies sisters of Gregynog gave £5,000 to the University for the purchase of art and crafts to be used in the education of trainee teachers, and which in turn might promote the revival of craft industries in Wales. They appointed architect Sidney Kyffin Greenlade as the Consulting Curator and the resulting Art and Crafts Museum was housed in the Old College. Drawing Master Dan Jones also helped curate the museum.

In 1936 all but £1,000 of the Davies gift was diverted to fund new building on Penglais and the collections were more or less moth-balled over the next few decades despite the

sterling efforts of the then curator Lambert Gapper.

In the early 1970s, Alistair Crawford and Moira Vincentelli came to teach in the new Visual Art Department, re-catalogued the artefacts and started making new acquisitions using the remaining funds, aided by gifts and grants from the Welsh Arts Council.

Since the 1980s the collections have had several more endowments to enable us to continue to acquire and exhibit the material in the collections and make loans to other museums.

We have focused on buying larger collections of material by a particular artist or group of artists rather than spending a large amount on one piece, and in doing so have been very successful in receiving grant aid from the V&A and Art Fund, often up to three-quarters of the purchase price.

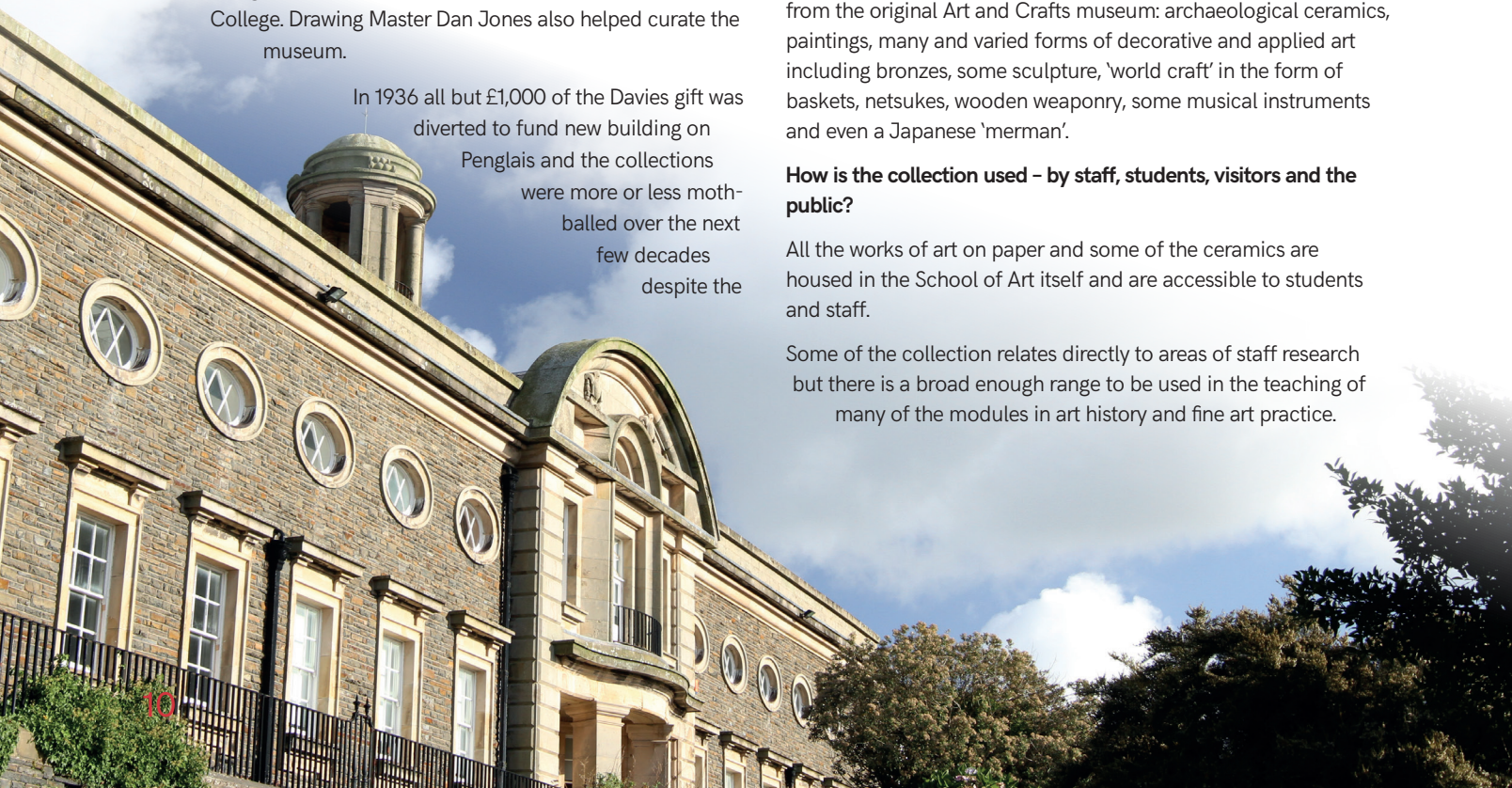
What sorts of works does the collection include?

We are now a fully accredited museum for our main collections: works of art on paper (prints, photographs, drawings and watercolours) and studio ceramics. We also inherited material from the original Art and Crafts museum: archaeological ceramics, paintings, many and varied forms of decorative and applied art including bronzes, some sculpture, 'world craft' in the form of baskets, netsukes, wooden weaponry, some musical instruments and even a Japanese 'merman'.

How is the collection used - by staff, students, visitors and the public?

All the works of art on paper and some of the ceramics are housed in the School of Art itself and are accessible to students and staff.

Some of the collection relates directly to areas of staff research but there is a broad enough range to be used in the teaching of many of the modules in art history and fine art practice.



It's vital that students come into contact with real works rather than just experience art as images on a screen.

We endeavour to keep the online database up-to-date so that staff, students and researchers can browse for the material they want to research. Inevitably with such a dynamic collection there is some difficulty keeping up with this and copyright restrictions can delay the release of images onto the database.

Tell us a bit about the School of Art's exhibition program

We usually mount between 15-20 exhibitions per year in three galleries. It's quite a hectic turnover but we have to fit temporary exhibitions around student shows - the annual Degree Show, two MA/postgraduate exhibitions and however many PhD exhibitions are in the pipeline.

The temporary exhibitions are either curated from the collections and made relevant to teaching, or we feature artists affiliated to the department, or those artists who we think would be of interest to students and to the public.

We cannot afford to buy-in expensive touring exhibitions and don't see it as our remit to do so. When planning our exhibition schedule we bear in mind that we are incredibly well served in Aberystwyth by the excellent exhibitions in the National Library, Ceredigion Museum, the Arts Centre and other exhibiting spaces such as Arad Goch.

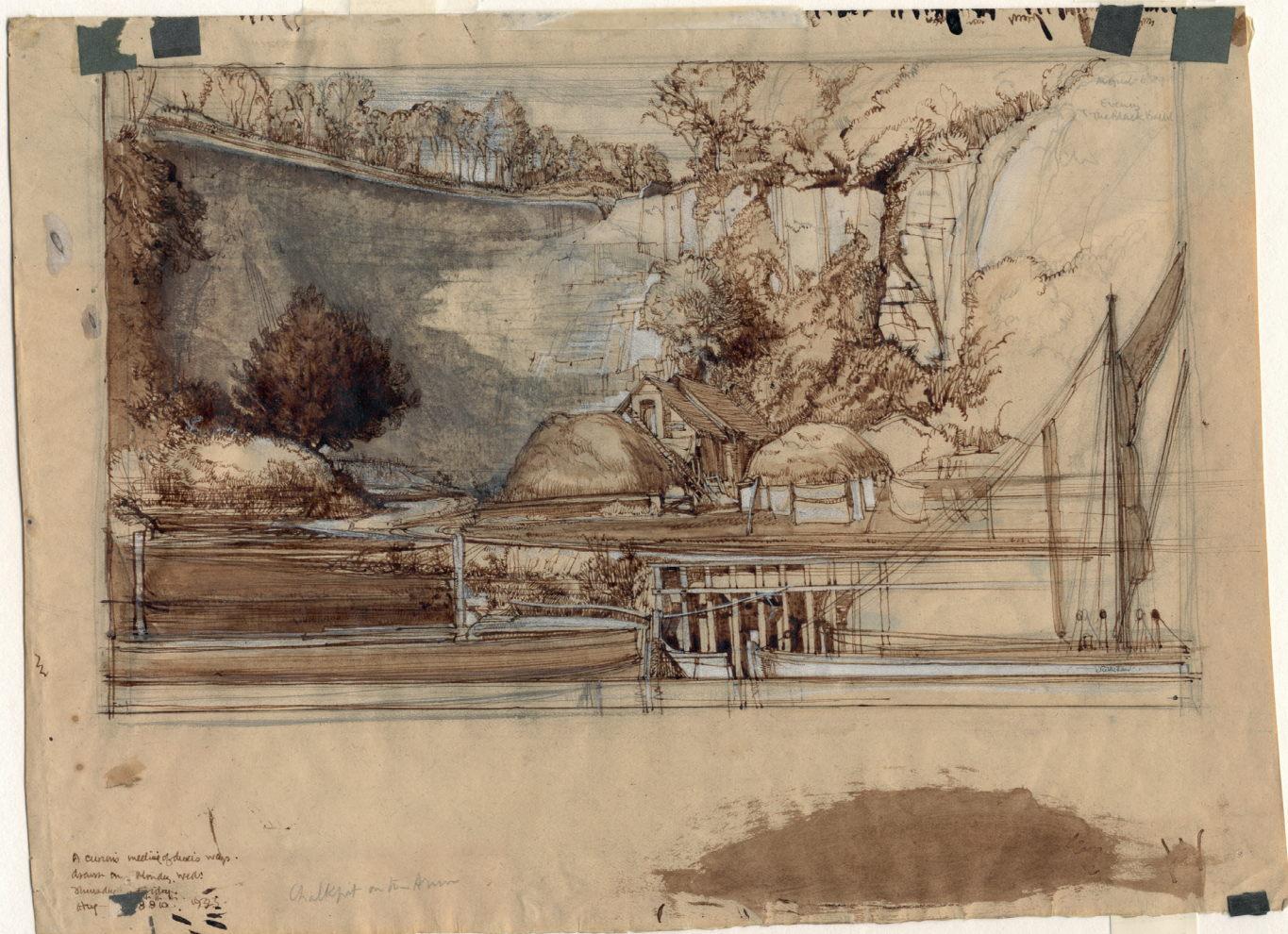
What is the main misconception that people have about the School of Art Gallery and Museum?

The one that springs to mind is that works are just lying there permanently in storage, effectively out of circulation and dead to the world. It's just not the case. In the past couple of years we've loaned over 200 works to other galleries and museums, ranging in size from the Burton Art Gallery in Bideford to the Turner Contemporary in Margate and the Sainsbury Centre.

This week I've been retrieving and assessing work for three exhibitions coming up over the next year, one of which is curated by undergraduate students. The majority of paintings (oil and acrylic), more robust than works on paper, we endeavour to hang around the campus.

What is your favourite piece in the University collection?

I have many favourite pieces, not necessary by famous artists, but this drawing *[below]* by the 20 year old Graham Sutherland always surprises me with its hidden details. His spidery annotations in the untidy margins are as evocative as the drawing itself and mark a series of moments in time as he sat there intensely observing the Black Rabbit Quarry near the river Arun in Arundel in 1923.



Evening the Black Rabbit / Chalkpit on the Arun. Graham Vivian Sutherland [1903-1980]. Sepia ink, watercolour, pencil on cream laid paper. Purchased from the The XXI Gallery in 1924 by Sidney Greenslade.

Image courtesy of the Estate of Graham Sutherland

KEEZLE WACKA



Julie Archer

Back in October 2019, *ABER News* highlighted the importance of the University archive, which documents the institution's history. Overseeing this invaluable resource is the University's Information Governance Manager, Julie Archer.

ABER News invited Julie to write a regular column providing us with a glimpse of some of the marvellous gems that have been preserved in the archive.

The column's title is taken from the Aberystwyth 'College Yell', which originates from 1905 when the decision was taken to establish a chant with which to support fellow Aber students at inter-college sporting events. Following a competition in the Old College Quad when a number of proposed yells were demonstrated by their composers, a winning yell was adopted. The expression 'Keezle Wacka' used in the Aberystwyth College Yell was later chosen as the title for the Aber RAG magazine which ran for several decades, and seemed an appropriately quirky title for this column.

The Misses How

Thanks to the financial generosity of the Cardiff branch of the OSA, and the volunteer time and enthusiasm of the Cardiff, Aber, and London branches, since 2016 we've been able to delve into the ten digitised volumes of registers of students entering College between 1872 and 1909.

As well as those students whose lives are well-known, like O. M. Edwards and T. H. Parry-Williams, we've unearthed new stories, often in unexpected ways.

The handwriting in the registers is sometimes hard to read, and, during Wednesday afternoons in Old College, transcribers would turn to each other to ask for a second opinion: "Is that John How, Tea Dealer or Pea Dealer?" "Stow" was my possibly unhelpful answer to the question Louise Perkins (OSA Honorary Secretary, 2008-2019) hadn't asked. I thought the surname could have been either, so we set about Googling Edith and John How or Stow.

Tea dealer was the consensus for the father's occupation. John How, grocer and merchant of Cheltenham and London.

We knew from the registers that Edith entered College, aged 19, in September 1893 and stayed for just over a year, studying Maths, Chemistry, Physics, Mechanics and Biology, obtaining a pass in Intermediate Science in 1894. Our wider search quickly told us she was joined at Aber in 1894 by her younger

sister, Florence. They overlapped only for a term, with the younger How studying the Arts until 1896. Both would later obtain London degrees.

Surprisingly, there's a lot of information out there about the sisters' life after Aber, as they were both prominent in the women's suffrage movement.

Edith taught for a time, including at Westfield College in London, married George Herbert Martyn in 1899, and became an early member of the Women's Social and Political Union (WSPU). Later joint Secretary with Charlotte Despard, she was arrested in the lobby of the House of Commons while trying to give a speech. She was one of the first WSPU members to serve time for the cause, when she was given a month-long sentence in Holloway Prison.

After concerns over the violent tactics of the WSPU under the Pankhursts, she left and helped to form the Women's Freedom League (WFL), in favour of non-violent, legal acts to convey their message.

Edith urged members to boycott the 1911 census, and not to pay taxes, and later stood as an



'The Misses How' in Private Secretary (Edith, seated)

independent candidate in Hendon in the 1918 General Election.

She was, unfortunately, unsuccessful, and after her defeat focused her attention on the issue of birth control for women of all classes. She had become interested after Marie Stopes had spoken to a group of suffragists in Cheltenham. She met the American family planning leader Margaret Sanger in 1915 and was impressed by her ideas, subsequently jointly organising the 1927 World Population Conference and becoming honorary director of the Birth Control International Information Centre in London in 1930. Edith pursued this work internationally, particularly in India, until her death in Australia in 1954.

Edith is also recognised among the names and images of 55 women and four men who supported women's suffrage, around the plinth of the statue of Millicent Fawcett in London's Parliament Square.

Her sister, Florence, remained in College till 1896 and then returned to Cheltenham, obtaining her degree from the University of London in 1898. She married in the same year as her sister, to William Earengy, and had a daughter. She, too, renounced the tactics of the WSPU in favour of non-violent protest such as demonstrations, non-payment of taxes and refusal to complete census forms, "if we don't count we won't be counted".

She became the very active leader of the Cheltenham branch of the WFL and coordinated the campaign of census evasion in the town. Neither she, her daughter, nor any resident servants appear with her husband in the census entry. As a solicitor, William couldn't risk committing an offence with a potential fine of £5- or two-months' imprisonment, but he did give legal advice on the campaign to the national Executive and to his sister-in-law, Edith, and later defended several suffragists in court. Florence, too, became a barrister, and one of the first women Justices of the Peace.

There is a wealth of information contained in our registers, with many rabbit holes still to be explored.

Aber scientists are helping save ancient Welsh apples and pears

Endangered varieties of apples and pears have been saved for future generations thanks to a 'living museum' planted by researchers at the Institute of Biological, Environmental and Rural Science (IBERS).

More than 60 historic Welsh apple and pear varieties feature in a new heritage orchard established at the Gogerddan campus by plant breeder and geneticist Dr Danny Thorogood.

The orchard was created as part of a National Lottery Heritage Fund project managed by the Welsh Perry and Cider Society.



Dr Danny Thorogood

The project identified trees from all over Wales that were found to be unique, using a DNA fingerprinting technique. These trees were then propagated and planted in the heritage orchard and replica orchards at other sites in Wales.

It will ensure scientists and growers have access to a genetic resource for all of Wales's ancient varieties, protecting important historic species from extinction.

Dr Thorogood hopes the University's orchard could play a central role in taking heritage varieties of apple and pear back into the mainstream.

AberSU celebrates
STAFF & STUDENTS

Nominate Today!
Nominating is as easy as 1,2,3!

1. Go to: www.abersu.co.uk/celebrates
2. Choose the Award
3. Tell us WHY they deserve the award and how it meets the awards criteria

In addition to the day job

Jim Vale joined the Plant Breeding Department at IBERS Gogerddan as Technical Manager in 2011. However, in addition to the day job, he is actively involved with the Wardens Theatre Company and played a vital backstage role as part of the creative team for their recent production of *Peter Pan*.

ABER News spoke to Jim about this side of his life.

(Oh no you didn't! Oh yes we did!)



How did you first get involved with the Wardens Theatre Company?

I have been involved with the Wardens Theatre Company for about nine years and am now one of the board of directors.

It all started in 2011 when I had moved up to Aberystwyth from Brecon to take over the job of Technical Manager for the Plant Breeding Department at IBERS Gogerddan. I was going through a divorce at the time and didn't really know anyone outside of work in Aberystwyth. I mentioned to a colleague that I had been involved in a local Pantomime in the Brecon area and did he know anyone who wanted scenery painting or just scenery being pushed around? He pointed me in the direction of the Wardens. Anyway, they didn't need a scenery painter as most of the set is hired in; so I became chief props maker!

What tasks do you carry out?

With a small dedicated team, we make all the props for the Pantomime each year and then work as backstage crew during the technical week and the actual run. This involves tasks as diverse as being taught how to use and fly the rigs used for characters like Peter Pan, to scenery changes, handing props on and off stage, setting up the scenery when it's delivered on the lorry and re-packing the lorry at the conclusion of the run. In addition to a myriad of other tasks as and when required.

What has been the most challenging prop you have had to create?

We had to make a full sized Egyptian Sarcophagus a few years ago for an adaptation of *Aladdin*. It took ages but was



Photo by Alex Gilbey

researched properly and carved out of sheets of wall insulating foam, paper mache and then intricately painted. The result was a credible copy of one of Tutankhamun's burial coffins. However, post production we had no room at the time to store it so we lent it to someone who had an Egyptian themed house party and it got wrecked! Last year the Wardens decided to re-visit *Aladdin* and we had to build another one! I now consider myself a bit of an expert in ancient Egyptian burial equipment. Needless to say, this one is now safely stored!

What is the best thing about being involved?

I'm proud to be part of a large and diverse team from many different walks of life who come together once a year to put on a show which regularly sells out and has accolades poured on it from many different quarters. The amount of work required to get the show on the stage is phenomenal with work beginning on the next production as soon as the last one has ended. We are all usually shattered by the end of the run but you can almost guarantee that the same faces will be there next year ready to do it all again. The camaraderie is incredible.

How do you feel when the curtains close on the last performance of the season?

Personally I'm relieved. Firstly that the show has run without any major incidents and that the huge number of people who see the show, (over 6000!), have gone away having been thoroughly entertained with pure fun, music and playful nonsense for an hour and a half in their otherwise busy and frenetic lives.

Secondly, because both the cast and backstage crew are thoroughly shattered by the end of the run! It's an incredibly

physically demanding task with little or no let up for about four weeks... and none of us are getting any younger!

In addition, it ends just as the day job starts to pick up and things begin to start growing out on the trial plots so the timing for me is perfect.



Is it true that the Wardens Theatre Company has played a matchmaking role in your life too?

Yes it's true. One of the first tasks I had to perform when I joined the Wardens back in 2011 was to fly a young lady who was playing a witch on a wire rig. The first time I met her she was in a bad mood due to being pulled out of work at an unscheduled time to try on the rig which I then had to fit around her waist. Her face was painted green and she was wearing a prosthetic nose and chin - what more could a man ask for?! We have now been married for nearly five years and have a three year old daughter. Therefore, joining the Wardens was a great move for me!

Smoking Policy



As part of a commitment to the health and wellbeing of staff, students and visitors, the University's Corporate Health Steering Group has been reviewing arrangements in relation to smoking on campus.

The University's Smoking Policy provides information about smoking and vaping on University grounds and in buildings and vehicles. It applies to everyone and covers all types of smoking and vaping products (including cigarettes, cigars, tobacco and e-cigarettes).

Key points:

- You must not smoke or vape inside University buildings or outside entrances, covered walkways, doorways, windows and vents or in vehicles when used for University business.
- If you are looking to improve your health benefits or you are concerned about the impacts of second hand smoke on your family, support and advice can be found from the [NHS Help Me Quit, Wales](#) or from the University's Employee Assistance Programme.

A new Smoke Free Zone has been created, which includes the buildings and the outdoor areas around the sports area of Penglais Campus. It will start at the rear of Edward Llwyd and Physics buildings, past the sports centre including the 3G pitch, past the sports cage and will include the Carwyn James building and car park.

The University Smoke Free Zone will extend the Smoke Free Zone up to the National Library of Wales.

The Corporate Health Steering Group are continuing to review smoking arrangements at the Gogerddan Campus and other locations.

More information and a map of the Smoke Free Zone will shortly be available on the Health, Safety & Environment Team webpage: www.aber.ac.uk/en/hse/proc-prac

Introducing the Students' Union Opportunities Team

Our Opportunities Team consists of 3 full time members of staff who support our work with our 150 student Sports Clubs and Societies.

Lucie Gwilt: Opportunities Manager

Lucie has been with the SU since October 2016 when she started as our Sports Coordinator, before being appointed Manager in September 2019.

Lucie's role is to enable and empower students to develop and access a range of extra-curricular opportunities which will add value to the student experience, promote student community, and the development of friendships, skills and memories that last a lifetime.

Lucie says: *"What I like best about my role is that every day brings something new. However, although the variety is great, it does mean that there is a different problem to solve every day. We try to keep every individual student and every one of our 150 groups happy but at times that can be a difficult task."*

Tom Morrissey: Societies Development Coordinator

Tom joined our team in June 2019 and works to maximise student participation in societies, for the purposes of growing shared interest communities, developing transferable skills, and providing valuable extra-curricular opportunities for members.

Tom supports almost a hundred societies (shared interest groups) ranging from more traditional academic based groups such as the Geography Society to newer or less traditional groups such as Aber Howl Society or KPop.

Tom says: *"We have almost a hundred groups and I work with over 400 student committee members to develop them. Each group has their own different needs and their own challenges and successes to celebrate, so my role is really varied and interesting. I am keen to help University staff to appreciate the difference that societies make to our Aber student community, and to raise awareness that societies, including academic societies, are all supported by the SU."*

Emily Stratton: Sports Coordinator

Emily started with our team in November 2019 and promotes student participation in sporting activities, including local, regional and national competition, for the purposes of growing shared interest communities, promoting a healthy student lifestyle and providing extra-curricular opportunities for members.

On a weekly basis Emily administers our team entries and travel for BUCS (British University and Colleges Sport) which sees our students heading off across the UK to represent Aberystwyth in a variety of sports. Emily also works closely with the University Sports Centre staff to allocate a range of free and paid-for training facilities.

Emily says: *"I love what participating in sport gives people: achievement, confidence, team work, and friendship groups that last a lifetime. I want all AU staff to understand the importance of competitive sport and the benefits it gives our students. The most challenging bit of my role is the BUCS administration and organisation, as hundreds of students taking part each week."*



The Students' Union Opportunities Team: Lucie Gwilt, Tom Morrissey, Emily Stratton

***Know someone who would make a good SU Officer?**

Standing period is open until 25 February and you can suggest a student now on our website!

www.abersu.co.uk/elections/suggestastudent

****Think someone should be nominated for an AberSU Celebrates award?**

Nominations are open until 27 March and we welcome nominations for clubs, societies, staff and student awards.

www.abersu.co.uk/celebrates

Students making a difference

As you will probably be aware, the Development and Alumni Relations Office (DARO) fundraises for key projects across the University, including the Aber Fund (Student Support), the Old College Appeal, and Research.

But what you may not be aware of is how students are making a huge impact on fundraising initiatives.

This February, DARO have employed 36 Student Callers from a range of departments, ages and study, to take part in this year's telephone fundraising campaign.

These students will help to raise funds for great causes across the University, making a difference to the University and future generations of students.

In the role, Student Callers have the opportunity to call (forewarned) alumni and update them on University news and events, and the impact of fundraising projects on the University.

It is also a chance for students to talk to alumni who have been in their shoes and find out what Aber's former students are up to now - perhaps to seek advice on future career prospects, find out about Aber in previous years, and broaden their minds to what is possible after Aber.

The role is incredibly helpful for students in developing key skills that can be used in any workplace environment. Communication is so important in the role. They need to actively listen, and engage, with the person on the other end of the line whilst also being able to persuade, negotiate, and hold

a professional, polite conversation. With the perception that young people don't pick up the phone anymore, the telephone campaign changes all that!

Last year's Student Callers go to show how making a difference to the University has impacted on them and their career prospects. Many of the Student Callers graduated in July 2019, having already found jobs in law, politics, and the tourism sector, for example. They have said how much the experience has helped them, and how much they enjoyed their time talking to alumni who have once studied at Aber, like them:

"The student caller job definitely stood me in good stead regarding my interview answers and applications, and I'd say it's been a key part in securing a role within a law firm." Ritchie (Law, 2019)

"I really enjoyed the call room atmosphere and hearing about people's time at Aber." Niamh (Geography, 2019)

"An experience I shall not forget for all that it taught me and the people I have spoken to and met." Oscar (History, 2019)

We are very grateful to all our previous Student Callers for being the voice of the University and making such a difference to its future during the telephone campaign.

The 2020 telephone campaign is in full swing now. We look forward to seeing how much confidence the Student Callers gain across the three-week campaign.



Some of this year's Student Callers
Left to right: Talwyn Baudu (PhD student), Larissa Carvalho Ferreira (PhD student), Oscar Seager (MA student), Maili Gallagher (2nd year), and Megan Griffiths (3rd year)



My research

Jess Friedersdorff is completing a PhD in the Institute of Biological, Environmental and Rural Sciences looking at viruses that infect bacteria, specifically those that could kill the bacteria responsible for contributing to greenhouse gas production in the digestive systems of farm animals.

ABER News spoke to Jess about her research:

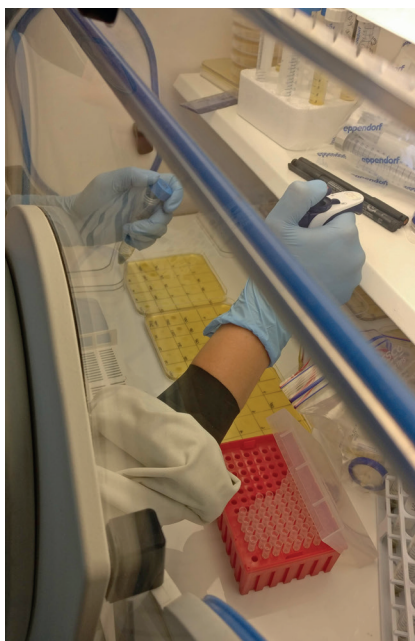
Tell us a bit about yourself

Before coming to Aberystwyth in 2016, I graduated from De Montfort University with a first class honours degree in Biomedical Sciences and completed an MSc in Infection and Immunity with distinction at the University of Leicester. I am now in the final stages of my PhD in Biological Sciences, funded by KESS II and Dynamic Extractions, supervised by Professor Chris Creevey (Queen's University Belfast) and Professor Alison Kingston-Smith (IBERS, Aberystwyth University).

Describe your research in a nutshell

I am a microbiology and bioinformatician. Essentially, I work with cow pre-poop and poop, laboratory experiments and computational "magic".

I study the rumen microbiome, the collection of microorganisms in the



first of four stomach chambers in ruminants (such as cows, sheep, goats etc). Amongst these microorganisms are something called bacteriophages. These are viruses that infect bacteria and have been of much interest of late. This is because they are very specific, don't harm other cells (such as human or animal) and lead to death of their bacterial targets. These characteristics have led bacteriophages to be the focus of research as an alternative to antibiotics.

Whilst this is interesting, human health is not my main focus. Instead, I wanted to look for bacteriophages to kill bacteria in the rumen that contribute to greenhouse gas production. The grass ruminants eat is broken down by the microbiome, and in the process makes carbon dioxide and methane. Some particular bacteria I am interested in targeting also make an excessively large amount of ammonia, which leaves the animal through the urine.

What's a typical day for you?

Recently I have been working in the office. I cycle up to the Penglais campus and go to my office, where I kick off my shoes, turn the radiator on, set up Spotify and start tapping away on whatever it is I am working on.

I am currently writing my thesis, but previously I have been carrying out genomic (DNA), transcriptomic (RNA) and metabolomic data analysis. This includes using the high-performance computing cluster available at IBERS to carry out computational analysis, using tools that other people have made to

analyse, annotate or look at whatever interesting things I can find.

The most exciting thing I have done recently is to sequence bacteriophages that I isolated myself from rumen and faecal samples. I then named them, rebuilt their genomes, found all the genes and did some comparisons and analysis before collecting it into a (hopefully) publishable paper.

What do you find most rewarding?

When I start something new, or have a particular question to answer, I enjoy looking for a computational tool that would be best to use. Then I have to look at how to install it, use it and interpret results. This is especially rewarding when there is a fancy looking graph, image or figure at the end!

The same applies to laboratory work; posing a question, finding a method that someone else has used and implementing it yourself and applying it to your work (often with modifications) and getting results is always really fulfilling.

What do you find most challenging?

I have a friend who says "bioinformaticians just press a button" - I wish this was the case! There is nothing more infuriating than trying to get something to work and just coming up against error after error, especially when the errors aren't well described! Of course, getting over these barriers is rewarding, but until then, resisting the temptation to throw the computer out the window in frustration can be very challenging.

Appointments

FINANCE DEPARTMENT

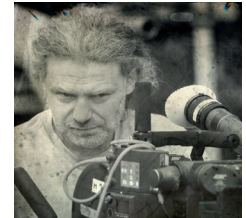
Mark Godsell has been appointed Deputy Director Finance. Mark was previously Assistant Director of Finance. A graduate of Birmingham University and qualified accountant, Mark has held several senior finance roles including working in Higher Education within Wales. Prior to this he had a twelve-year career in housing, focusing on corporate business planning and financing. Mark took up his role in December 2019.



worked with numerous companies and national organisations as an independent communications consultant. Steve took up his role on 27 January 2020.

DEPARTMENT OF THEATRE, FILM AND TELEVISION STUDIES

Gyorgy Beck has joined the department as a lecturer. He graduated from the University of Theatre and Film Arts (Budapest, Hungary) and is an accredited member of the Hungarian Society of Cinematographers (HSC). He is a filmmaker and artist working in diverse genres of the visual arts. His works have been screened/exhibited extensively throughout Europe and the US. As an educator, he has given lectures/workshops at such prestigious institutions as the Tisch School of the Arts at New York University, the California Institute of the Arts.



SCHOOL OF EDUCATION



Dr Andrew James Davies is the new Head of the School of Education. Andrew joined Aberystwyth University in 2010 and, since 2018, has been Assistant Director of the School of Education. Andrew began his academic career at Cardiff University School of Social Sciences, before working as a Research Fellow

at the University of Wales, and in a number of applied policy research roles outside academia. His research interests focus on professional learning, teacher recruitment and retention, the sociology of education and childhood, and post-compulsory bilingual education. Andrew took up his role in December 2019.



Sara Penrhyn Jones will join the Advanced Media Production Project at Aberystwyth University, an online postgraduate MA, led by Dr Helen Miles. Sara has extensive experience of multi-media production, and will teach through the medium of English and Welsh. Her expertise includes creative practice as research in the environmental humanities.

DEPARTMENT OF GEOGRAPHY AND EARTH SCIENCES

Dr Rita Singer recently joined the EU-funded 'Ports Past and Present' project in her role as Post-Doctoral Research Associate and Project Co-ordinator. Previously, she worked on projects led by the Royal Commission on the Ancient and Historical Monuments of Wales and Bangor University. Her research interests include Welsh writing in English, travel writing and the cultural heritage and history of Wales.



VICE-CHANCELLOR'S OFFICE

Professor Helen Roberts has been appointed Director of Research Excellence. Helen joined the Department of Geography and Earth Sciences as a Post-Doctoral Research Associate in 1998, securing funding for a series of postdoctoral research positions before taking-up a lectureship in 2005. She is co-Director of the Aberystwyth Luminescence Research Laboratory (ALRL), which is internationally recognised for its expertise in pure and applied luminescence research. Helen took up her role in December 2019.



COMMUNICATIONS AND PUBLIC AFFAIRS



Steve Thomas is the new Head of Communications and Public Affairs. Steve has extensive experience in senior communications roles, working for and with a number of national organisations. Having begun his career as a journalist with the BBC, he went on to work in politics and government and

was a Special Adviser to Welsh Government ministers. A former Strategy and Policy Adviser and former Director of Communications and Information at S4C, Steve has also



Heledd Davies joined the Centre for Welsh Language Services as a Translator Specialising in Simultaneous Interpretation at the beginning of November 2019. She is a member of the team that provides an English > Welsh and Welsh > English translation service to all academic and administrative

departments within the University. Heledd also provides a simultaneous interpretation service at various committees and events, e.g. the Court, the Council, the Senate, departmental boards and conferences and meetings arranged by University departments. Before joining the University, Heledd worked in various public sector roles and, more recently, as a freelance translator/interpreter.

Melanie Evans (1969 - 2019)

Melanie Evans joined the staff of the University Music Centre in 2001 as Music Assistant and retired on health grounds in 2014.

Born in Carmarthen, Melanie moved as a child to the Midlands. She returned to Wales, enrolling at Aberystwyth University as a mature student in 1997 and graduated in Welsh History in 2000.

An outstanding flautist, Melanie was awarded a Music Bursary and became a key player in both Philomusica and the University's Symphonic Wind Band. Taking over as principal flute in Philomusica, she remained with the orchestra for twenty-two years, right up to the performance of Neil Brand's 'Underground' in March 2019.

Melanie was for many years a familiar face at graduation ceremonies, where she performed highly polished musical interludes in partnership with a harpist.

Much in demand as a flute teacher, Melanie also involved herself enthusiastically and tirelessly in all kinds of music-making locally, as well as further afield. If you heard a flute in the pit for Wardens' pantomime, or on stage for local choral performances, it was more than likely to be Melanie playing it.

Melanie passed away on 21 November 2019 at her home in Llanilar, aged 50 years.

Professor Maldwyn Mills (1926-2019)

Professor Maldwyn Mills joined the then Department of English Language and Literature at the University College of Wales, Aberystwyth in 1959.

He was appointed to a personal chair in 1979, served as Acting Head of Department from July 1984 to June 1985 before his retirement in September 1993.

He continued as Professor Emeritus and remained an active figure in the field of medieval studies, both in Aberystwyth and beyond.

Professor Mills is best known for his work on medieval English Romances, producing both well-respected scholarly editions and a range of highly-acclaimed articles and essays.

Professor Diane Watt (former Head of Department and now Professor of Medieval Literature at the University of Surrey), says that it was "a great privilege to follow in his footsteps after his retirement from Aberystwyth in 1993. Maldwyn's Everyman editions of *Troilus and Criseyde* and *Six Middle English Romances* have been hugely influential for generations of students."

The Department of English and Creative Writing at Aberystwyth continues its long tradition of teaching and research in medieval studies, a tradition that was consolidated by the influential presence of Professor Mills for over three decades.

Dr Malte Urban, lecturer in Medieval Literature notes: "I met Professor Mills on a number of occasions while working on my PhD. He was a true scholar and gentleman, and his death is a great loss not only to the field of Romance studies but also to the Aberystwyth community."

Professor Maldwyn Mills passed away on 26 November 2019, aged 93.

Emeritus Professor Glanville Price (1928-2019)

Glanville Price, Emeritus Professor of Romance Languages in the Department of Modern Languages (formerly the Department of European Languages), was born in Rhayader on 16 June 1928.

He received his BA (1949) and MA from the University College of North Wales, Bangor, and his doctorate (1956) from the University of Paris.

He was appointed Lecturer in French at the University of St Andrews in 1958, from where he moved to a Chair at the University of Stirling in 1967, before taking up his Chair in what was then the separate Department of Romance Languages at University College of Wales, Aberystwyth in 1972.

He was originally appointed to the Chair in French but his title was changed to Professor of Romance Languages in 1975, a more accurate description of his research and teaching interests, which included French and Spanish linguistics and Romanian. He also showed a lifelong concern with minority languages and with the Celtic languages in particular. Although born in a long-anglicised part of Wales he had acquired an excellent command of Welsh.

His book *The French Language: Present and Past* (1971) is still used for teaching the history of French in many universities, as are his multiple revised editions of Byrne and Churchill's *A Comprehensive French Grammar*. He was also a prolific and meticulous editor, including of books on minority languages.

His retirement in 1995 did not mean a cessation of his research activities and he carried on providing an energetic example and cheerful encouragement to colleagues as Emeritus.

Emeritus Professor Glanville Price passed away on 22 December 2019, aged 91.

Exhibitions

School of Art Gallery, Buarth Mawr

Open Monday to Friday, 10am to 5pm. Free admission.
Closed 10-14 April.

Another Line to Follow

2 March - 1 May

Another Line to Follow celebrates the ongoing friendship and collaboration between artists who met whilst teaching or studying art at Aberystwyth University.

The five artists, Carolyn Wallace, June Forster, Rachel Rea, Tom Voyce and Alysia Webster, came up with the concept of 'following lines' as a way of using each other's work and ideas as a springboard to produce new artworks of their own.

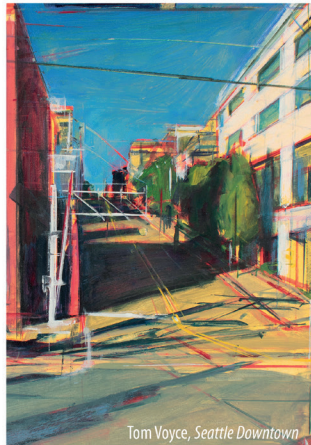
Each 'line' can be traced back to a starting point - a drawing, a postcard communication or a finished artwork - and responses were made to it using a variety of materials and techniques. These included drawings in pencil and ink, collages, mixed media and paintings.

Through the exhibition, the artists intend to provide an insight into the creative process and to demonstrate how a series of work can be produced from the slightest of starting points.

The exhibition aims to inspire current students to understand that communication and collaboration go on far beyond university; there is always *another line to follow*.



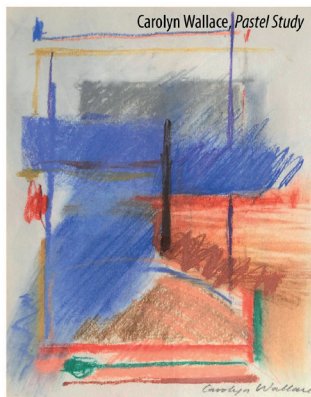
June Forster, *Around Scourie*



Tom Voyce, *Seattle Downtown*



Rachel Rea, *Blues*



Carolyn Wallace, *Pastel Study*



Alysia Webster, *Nant-y-Moch 3*

A Radical Tradition – Eine Radikale Tradition

2 March - 1 May

Since its invention in 1839, the power of photography to form and direct public opinion and influence the interpretation of information and ideas has been well documented. Yet, despite this, as an image-saturated society we are sometimes ill-informed about and lack an understanding of the impact that a constant exposure to the image can have. In an increasingly polarised era of 'fake news' understanding this impact and learning to read the image in context (however ordinary it might appear to be) is more important than ever before.

This exhibition explores the work of three relatively unknown twentieth century German photographers - Hans Saebens (1895-1969), Hans Retzlaff (1902-1965) and Erich Retzlaff (1899-1993). Their work during the 1930s and 1940s was produced as part of a widely circulated visual framing of German peasants and their 'Heimat' or homeland. Photography was a central tool in forming a sense of a national identity during the Third Reich and, in order to continue working, photographers needed to be aware of, and in line with, the expectations of Hitler's new state.

These highly skilled photographers focused on the face, the body and the landscape and their approach reflected international trends in 'art' photography. With straight, sharp, often close-cropped images, they used state-of-the-art early 20th century photographic technologies such as the new 35mm Leica camera. Yet, because of the relationship of these photographers to National Socialism and its propaganda this photography has been, not surprisingly, neglected in the broader history of the subject.

These are not 'neutral' photographs they are romanticised representations cloaked in the guise of a documentary approach. They are intrinsically political artefacts inextricably bound to Hitler's Third Reich.



Hans Saebens, *Blick zur Hamme-Niederung vom Weyerberg Worpsswede, c.1935-40*

Aberystwyth Arts Centre

KIN

National Dance Company Wales

7.30pm, Tuesday 25 February

Dance that connects us. It brings people, families, friends, clubs, teams, tribes and communities together.

NDCWales perform poetry, sport and politics across three powerful pieces of dance.

Ryghi: Here is uplifting: full of hope, glory and camaraderie. It celebrates the pride and passion that rugby players and fans experience together.

Lunatic is an energetic riot. It is fun, relevant and fired up. It smashes together '30s music and style with '90s pop-culture. First shown 10 years ago it is fuelled by questions surrounding nationality, gender and class.

Time and Time and Time is elegant. Dancers reveal a shimmering poem about the relationship between the history of time and the poetry of destiny.

www.aberystwythartscentre.co.uk/dance/ndcw-kin



BBC National Orchestra of Wales

String masterpieces Tchaikovsky and Mozart

7.30pm, Thursday 19 March

BBC National Orchestra of Wales leader Lesley Hatfield directs this programme of delightful works that include one of Mozart's most celebrated concertos and Tchaikovsky's masterpiece for string orchestra.

www.aberystwythartscentre.co.uk/classical-music/bbc-now-6

WOW Wales One World Film Festival

Friday 20 - Thursday 26 March

Each year WOW Film Festival brings a beautiful and thought provoking selection of films from around the globe to Aberystwyth Arts Centre. Expect cinema from Japan, South America, North Africa, Tibet, and the Middle East. This is your chance to experience the best films the world has to offer, with stories that you rarely get to see on the big screen. The festival will feature a range of talks and discussions, and for the second year hosts Abercon, an inclusive anime convention with animation workshops, stalls and cosplay on Saturday 21 March. www.aberystwythartscentre.co.uk/cinema/gwyl-ffilmiau-wow-film-festival



Tylwyth

Theatr Genedlaethol Cymru and Sherman Theatre

7.30pm, Friday 20 - Saturday 21 March

Aneurin has been running away from his past, but - thanks to Grindr - he unexpectedly finds love. When he and Dan decide to adopt, it seems their world is complete. But as he adjusts to being a dad and tries to move on from his reckless past, Aneurin is forced to confront his demons. Ten years on from the trail-blazing and award-winning *Llwyth*, Aneurin, Rhys, Gareth and Dada are back in this witty and compelling new play by Daf James. Taking an irreverent look at love, family and friendship, *Tylwyth* is a provocative commentary on contemporary Welsh life.

Age Guidance: 16+. Contains strong language, scenes of a sexual nature and adult themes.

www.aberystwythartscentre.co.uk/theatre/tylwyth

Lost in the Rhythm

An evening with Strictly's Amy Dowden, Ben Jones and Colin Jackson

7.30pm, Sunday 5 April

Star of *Strictly Come Dancing*, Wales's very own Amy Dowden and her partner, British Champion Ben Jones, bring an exciting new show to the stage. With the help of their long-time friend and *Strictly* finalist Colin Jackson and a cast of supporting dancers, Amy and Ben bring a powerful love-story to life featuring all your favourite Latin and Ballroom styles. The show also features a live vocalist and stunning soundtrack guaranteed to get the audience moving too - it's time to get Lost In The Rhythm!



www.aberystwythartscentre.co.uk/dance/lost-rhythm-strictly



Make sure you pick up the Arts Centre Spring 2020 brochure, which is also available on the website:

www.aberystwythartscentre.co.uk