

**PRIFYSGOL CYMRU:
UNIVERSITY OF WALES ABERYSTWYTH**

FACULTY OF ARTS

Department of European Languages

Personal Development Planning (PDP)

CONTENTS

Content

What is PDP in the European Languages' curriculum?

How will you benefit from the PDP?

How does PDP work?

PDP elements

Compulsory PDP elements (table 1)

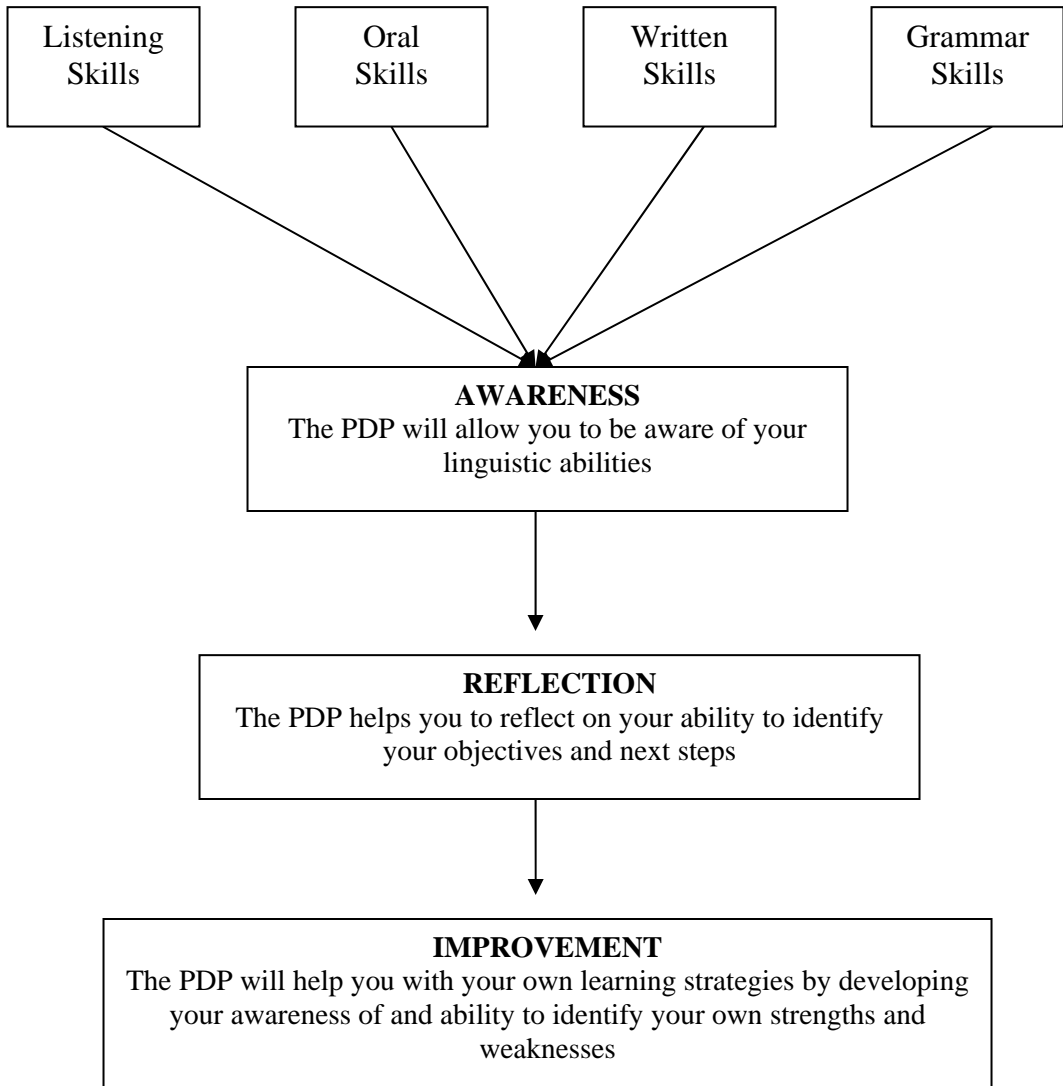
The PDP file

What is the PDP in the European Languages' curriculum?

The PDP has two principal purposes:

1. to help you to reflect on your own learning, oral performance and writing abilities during your three year degree.
2. to help you to plan your own development and progress in Language Learning.

The PDP involves the following components:



How will you benefit from the PDP?

With the PDP you will have a record of factual information about your language courses and types of work, and of personal reflection on how to structure your progress adequately during each academic year. It will make you aware of your strengths and of weaknesses and of how to design new strategies to approach the different components of learning.

You will have the:

- ability to identify the elements of language tuition
- the possibility of improvement in the learning process
- ability to identify the linguistic levels already achieved and your future goals
- ability to reflect on the internal parts of the process of learning a language process

How does the PDP work?

In the Department of European Languages, the PDP has been designed to **integrate** all elements of the core academic curriculum. It is also designed to provide **feedback** on your input and your ability to reflect on your learning targets. Finally, it has been designed with a **structured framework** to facilitate your reflection on it.

Elements of the PDP

The elements of your PDP file are summarized in table 1. The form, which you will have to fill in and submit to your language tutor in the 2nd semester of each academic year, will cover the compulsory elements. You can also add to these compulsory elements any additional information related to your process of learning

**PERSONAL DEVELOPMENT PLANNING FILE
YEAR ONE**

All Languages

Listening:

- Evaluate your progress in listening skills. Reflect on your ability to understand real life situations in the target language.

Oral:

- Evaluate your progression in oral skills. Reflect on your capacity to engage in advanced conversations with native speakers and on your improvement in oral presentation strategies in the target language.

Writing:

- Evaluate your written skills and language accuracy. Reflect on the key skills that you have developed to express yourself in the target language.

Grammar:

- Evaluate your grammatical skills, both oral and written. Identify weaknesses in linguistic terminology in the target language, and your ability to use connectors to move from simple to sophisticated linguistic structures.

**PERSONAL DEVELOPMENT PLANNING FILE
YEAR TWO**

All Languages

Listening:

- Assess your ability to identify national and regional accents
- Assess your ability to understand a wide variety of academic topics

Oral:

- Assess your ability to identify registers in different social contexts
- Identify the skills developed to allow you to follow a lecture/conference in the target language

Writing:

- Identify strategies to structure and develop academic knowledge in the form of an essay
- Assess your skills in identifying and using advanced grammatical structures

Grammar:

- Comment on your personal strengths and weaknesses in advanced grammar.
- Assess your ability to explain and understand a grammatical topic in the target language

**PERSONAL DEVELOPMENT PLANNING FILE
YEAR THREE**

All Languages

Listening:

- Assess your ability to identify and understand regional variations in accents & idiolects
- Assess your ability to discuss academically sociolinguistic issues found in real life conversations

Oral:

- Comment on your ability to change language registers depending on the social environment in which you find yourself
- Briefly comment on your command of oral skills and your ability to participate in every possible conversation

Writing:

- Identify key writing skills that you have developed
- Include brief comments on how your written skills will enhance your job prospects

Grammar:

- Write a brief report on how you have developed the use of all grammatical structures
- Include brief comments on your personal strengths and weaknesses in the use of grammar

**TABLE 1
COMPULSORY PDP ELEMENTS**

Year	Modules	Compulsory elements of the PDP file	Assessment type	Assessment deadline
1	Language (FR, SP, GE, IT19930; 10740 & 21530)	<ul style="list-style-type: none"> • Details of listening development • Oral skills & Oral presentation strategies • Writing language accuracy • Use of advanced grammatical aspects 	4 questions written in the target language (total: 400 words approximately)	The deadline will be notified by your language tutor
2	Language (FR,SP,GE,IT20130)	<ul style="list-style-type: none"> • Overview of listening activities • Reflection on conversation and presentations • Reflection on and details of different strategies for writing essays • Awareness of grammatical concepts and uses 	4 questions written in the target language (total: 500 words approximately)	The deadline will be notified by your language tutor
3	Language (FR,SP,GE,IT30130)	<ul style="list-style-type: none"> • Details of and reflections on registers, accents and idiolects • Use of a variety of grammatical structures, specific lexis and accuracy in a vast range of conversations • Reflection on the ability to discuss intellectual topics • Comment on your ability to use grammatical terminology and your consciousness of grammatical choices 	4 questions written in the target language (total: 800 words approximately)	The deadline will be notified by your language tutor